

UDC 711.4:314.151.3-054.73(477-88)
DOI: 10.56318/as/2.2025.106

Yuliya Idak*

Doctor of Architecture, Professor
Lviv Polytechnic National University
79000, 12 Stepan Bandera Str., Lviv, Ukraine
<https://orcid.org/0000-0002-1123-5759>

Challenges of urban development in providing temporary housing for internally displaced persons: Lviv experience

Abstract. This study highlighted the contradictions that arise when addressing the housing needs of internally displaced persons and analysed their impact on the sustainable development of the city. The purpose of this study was to identify the urban planning problems caused by the establishment of modular settlements in the already developed urban environment of Lviv, where four such settlements were organised in 2022 and to assess their impact on urban structure and sustainable development. To fulfil the purpose of the study, theoretical methods were applied, particularly the logical-philosophical approach to studying temporary housing as a process that occurs in specific socio-economic conditions. An urban planning and comparative-typological analysis of these settlements was performed, evaluating their potential in the context of urban development and the provision of temporary housing. A negative impact on urban structures was identified due to the mismatch between the needs and challenges of sustainable development, particularly in terms of functional identity and the integration of such settlements into the existing environment. Based on the results, it was proposed to consider modular settlements as part of multifunctional structures that must be flexible and adaptive to changes in the socio-economic context. The practical significance of this study lies in the development of recommendations for urban planners on implementing adaptive approaches in designing temporary settlements, ensuring the sustainable development of urban areas, and fostering social interaction between internally displaced persons and local communities

Keywords: modular town; regional centre of Western Ukraine; urban environment; contextuality; sustainability

INTRODUCTION

Security is one of the key factors forcing the population to leave their homes, escaping the consequences of military actions, temporary occupation, manifestations of violence, human rights violations, and anthropogenic disasters. In the context of forced displacement, such individuals acquire the status of internally displaced persons (IDPs) (Law of Ukraine No. 1706-VII, 2014). An adequate living environment plays a crucial role in the adaptation and social integration of IDPs. Housing shortages, mismatches with their needs, or the temporary nature of their housing arrangements can negatively affect urban development, complicate adaptation processes, increase social isolation,

and influence the economic activity of displaced persons. This issue became particularly acute in Ukraine after 2014 and reached a critical level in 2022 due to the full-scale war. A. Pleshkanovska *et al.* (2024) emphasised that urban recovery strategies should be based not only on the physical restoration of housing but also on the preservation of cultural heritage, energy efficiency, and the formation of an inclusive environment. Analysing the housing needs of IDPs, C. Jayakody *et al.* (2022) highlighted that housing plays a key role in community recovery and determines the long-term satisfaction of displaced persons. Viewing housing solely as a physical resource without considering social,

Suggested Citation:

Idak, Yu. (2025). Challenges of urban development in providing temporary housing for internally displaced persons: Lviv experience. *Architectural Studies*, 11(2), 106-117. doi: 10.56318/as/2.2025.106.

Journal homepage: <https://arch-studies.com.ua/en>

Architectural Studies, 11(2), 106-117

Received: 07.01.2025 Revised: 18.05.2025 Accepted: 01.07.2025

*Corresponding author



Copyright © The Author(s). This is an open access article distributed under the terms of the Creative Commons Attribution License 4.0 (<https://creativecommons.org/licenses/by/4.0/>)



economic, and psychological aspects may lead to various problems, including marginalisation and spatial segregation of IDPs. V. Borysenko (2023) addressed the lack of focus on integration processes in the pre-war period and stressed the significance of fostering a culture of hospitality and a sense of belonging during the adaptation of IDPs.

Since February 24, 2022, Lviv has been one of the main places of concentration for IDPs. As of the end of January 2023, 251,000 IDPs were registered in the Unified Information Database in the Lviv region. However, their real number is much greater (The real number is..., 2023). Most IDPs are children, women, and people with disabilities. The problem of providing housing prompted the development of certain regulations (Resolution of the Cabinet of Ministers of Ukraine No. 495, 2022) and led to the formation of temporary residential centres. Various shelters (Kostyk, 2022) and modular towns (Press service of the Lviv Regional State Administration, 2022) were created, focused on providing temporary housing for IDPs. As a result, distinct communities emerged, united territorially and bound by shared problems and interests.

The idea of housing provision appeared to be resolved; however, social issues and challenges related to the harmonisation of the newly formed urban environment began to intensify. The official website of the UNICEF in Ukraine (2023) noted that due to the abrupt change in their place of residence, physical isolation from the outside world, and the loss of familiar social connections, internally displaced persons experienced significant social and psycho-emotional challenges. The creation of clusters that are uncharacteristic of the existing residential environment – functioning as typical territorial units with clearly defined boundaries and a minimal set of infrastructure elements – disrupts established urban structures, some of which have a deep historical context. As a result, O. Panchenko (2022) pointed out that this issue became a subject of controversy among architects and urban planners, particularly in discussions about the appropriateness and correctness of hasty decisions. This is especially relevant in cases where the long-term impact of such decisions stays uncertain. The phrase “Nothing is more permanent than the temporary”, cited in the study by B. Etzold *et al.* (2022), is central to this discussion and particularly underscores the urgency of the issue at hand.

It is essential to consider that the lack of experience and theoretical foundation in addressing such issues is natural, as the situation in Ukraine is unprecedented. Research on social integration and the spatial organisation of the residential environment for IDPs is based primarily on previous experience, particularly on conceptual and empirical studies published before 2022. Z. Senkiv (2021) attempted to outline the phenomenon of spatial segregation in Lviv and identified its influence on the current situation. Yu. Idak & R. Frankiv (2022) raised the same issue. While examining the formation of gated communities, the researchers traced the relationship between the level of social isolation and the structure of the urban environment.

The researchers noted that such enclosed residential complexes exacerbate the divide between local residents.

The issues of integrating IDPs into society and harmonising all elements of the urban environment are important and require thorough research in various sectors. These aspects concern the development of specific approaches and recommendations that would facilitate the creation of favourable conditions for their living and interaction with other residents, as well as the preservation of the integrity of the already formed urban environment. To supplement the theoretical base on this topic, the present study explored the experience of forming temporary housing and examined the problems that the city faced after establishing a residential environment for IDPs. The study also described the mechanisms that influenced the socialisation of these individuals and fell within the competence of urban planners. Additionally, the study addressed the issue of forming a temporary residential environment for IDPs in cities, which had not been addressed in urban planning. This can help improve their quality of life and ensure sustainable development of the city overall.

LITERATURE REVIEW

Due to the complexity and multidimensionality of the problem of displacement caused by war, there is a need for sectoral prioritisation of this issue. Considering the specificity of each situation, it is necessary to address the issues of socialisation of IDPs with consideration of the context in which they arise. R. Patel *et al.* (2020) argued that to better understand how political, social, economic, and environmental factors interact in cities, it is vital to combine multiple disciplines and approaches. To address urban risk issues, integrated strategies must be employed that would account for the interaction of various factors influencing specific challenges. Such research will help to understand how different risks can amplify each other and how these risks may affect particular communities and groups in cities.

A. Mitchell (2022) emphasised that during 2010-2020, there has been a renewed interest in time within human geography. This trend is particularly pronounced in migration studies. The researcher explored sanctuary practices, which can alter the rhythm and flow of time, deviating from the linear, progressive perception of time that dominates modern state systems. E.L.-E. Ho (2021) covered contemporary ways of conceptualising the connection between time and temporality with space to analyse social relations, social inequality, and social justice. The researcher argued that temporal frameworks and strategies for how people interact with unequal socio-spatial relations were central to ongoing issues for social geographers.

G.W. Tefera & A. Gamlen (2024) analysed three approaches to migration research, criticising the conventional use of classical time categories. To problematise and dereify these categories, the researchers proposed using the term “temporal logic”, which enables a more detailed analysis of time in the processes of migration, mobility, and displacement. A. Sisson (2021) examined the





phenomenon of territorial stigmatisation, particularly in the context of its development in the 21st century. The researcher explored how territorial stigmatisation is used to explain the negative reputation of certain places, as well as the processes that lead to the creation of this reputation.

The study of Ukrainian experience allowed analysing the internal approaches to functional-planning optimisation of cities (Ustinova & Pleshkanovska, 2023), which ensure more efficient use of their territories and development towards sustainable development. Attention was also drawn to the fact that in modern conditions, the socio-psychological factor, namely the attitude of the population as consumers of the urban environment towards the city, is becoming increasingly significant. Additionally, there is a growing need to develop comprehensive approaches aimed at preserving urban landscapes in various urban contexts (Yatsenko *et al.*, 2024). Of particular significance are issues related to the adaptation of urban areas to changes in socio-economic and environmental conditions, requiring a synergy between functional, aesthetic, and ecological aspects of planning.

Mentioned studies emphasised the necessity of an integrated approach to addressing issues related to urbanisation challenges, social integration, and the adaptation of urban areas to conditions caused by population displacement. Existing sources highlight the multifaceted nature of these processes, encompassing social, economic, spatial, and temporal dimensions, as well as the development of effective strategies for urban environment management. However, the issues of functional and planning development and optimisation of urban territories, aimed at enhancing their efficient use and ensuring sustainable development under the influence of internal and external factors, pose a challenge for urban planners. This challenge involves striking a balance between the needs of diverse social groups, preserving cultural and natural heritage, and integrating innovative approaches into spatial planning. It requires consideration of local specificities, adaptability of design solutions to changes in the socio-economic environment, and the creation of conditions for sustainable urban development that not only respond to challenges but also leverage them to improve the quality of urban life.

MATERIALS AND METHODS

This study was based on an analysis of three modular settlements and one winter settlement IDPs in Lviv: the first one is located in the Strytskyi Park area, the second one is situated on undeveloped plots of land in a residential area formed in the 1980s on Puliuiia Street, the third one is located on the territory of the Ukrainian Greek Catholic Church, and the fourth, the winter settlement, is situated nearby. Each of them can be considered a relatively independent object in terms of complex urban planning and according to their physical and social context. They are located in a developed urban environment and consist of standard residential modules equipped with all the necessary amenities for comfortable living. Additionally, they have

infrastructure for social support of residents, such as medical points, kitchens, laundries, recreational areas, educational spaces, childcare facilities, psychological support centres, and community meeting halls. The territories of all settlements are landscaped, including inner courtyards with modern street furniture, flower beds, and planted trees.

The study was based on an interdisciplinary approach that allows investigating the declared problem in the interrelation of different scientific fields, such as psychology, sociology, architecture, urban planning, etc. In this context, the study analysed the risks through which war-related migration of citizens to less affected regions may disrupt the integrity and harmony of the existing urban environment. The study was conducted in several stages using the following methods: logical-philosophical, urban planning, comparative-typological, and hypothetical-deductive.

The study begun with the application of logical-philosophical analysis to investigate the problem of the temporal aspect in the formation of the material-spatial environment, which is necessary to ensure human life. The logical-philosophical analysis was performed in two stages: first, the problem was formulated, which consisted of establishing the connection between the temporal aspect and the formation of the material-spatial environment; second, the arguments and evaluation of ideas existing in the context of the formulated problem were studied. The outcome of the logical-philosophical analysis was the identification of key arguments that offered a better understanding of the problem of temporality, which extends beyond the usual fixation of a limited time period. Based on critical literature (Hajjari & Sarvestani 2017), it was noted that this problem is perceived as a universal one, through which a person experiences and understands time. In addition, the logical-philosophical analysis was applied at the stage of discussion, where, based on critical reflection and evaluation of arguments regarding the stated problem, ways to solve it were proposed.

A city planning analysis was further conducted on four modular towns and based on its results, a comparative-typological analysis was performed. Their essence was to determine the strengths and weaknesses of the delineated territories, their potential and limitations, as well as to establish connections between various aspects of IDPs living in an already developed urban environment, such as social, ecological, transport, etc. The analysis results enabled a formal evaluation of the causes of disharmony in the developed urban environment.

Considering the problems of interaction between humans and the environment, as well as the consequences of intervention in the already developed urban structure using Lviv as an example, a hypothesis was put forward that solving the problem of housing for IDPs should be linked to the formation of multifunctional structures. These structures positively influence the city's development and their participants enrich their social experience and can enjoy social connections. Such a hypothesis expands the understanding of the problem of forming temporary housing



environment for IDPs and the possibilities of its solution without disrupting the formed material-spatial environment of human life. The hypothetical-deductive method was applied to test the hypothesis.

Accumulation of information about the organisation of living environments for IDPs and their comparative-typological analysis were made possible by an updated source base. It included photo and video materials, observations, generalisations, graphic representations, and diagrams regarding the problems of IDPs in the Lviv region, as well as available recommendations, catalogues, and manuals (Official website of the World Health Organisation, n.d.), the International Organisation for Migration (IOM) (2023), the Council of Europe (2006), the UN Refugee Agency (2024) and the United Nations Economic Commission for Europe (UNECE) (2021). Considering the large amount of available and diverse materials, as well as for the sake of consistency, their scope was limited. Therefore, sources related to refugees, social housing, and construction solutions were excluded. Statistical data obtained from official sources became significant for determining the real state of such territories.

RESULTS AND DISCUSSION

Prerequisites for studying the impact of migration processes on the organisation of the residential environment for internally displaced persons. The most widespread and accessible sources of information on the problems of integrating IDPs and organising their living environment are documents from the UN (Council of Europe, 2006) and IOM (2023) – a leader in the study of IDPs issues. There are also recommendations developed based on these documents (Paraskeva, 2017) and mechanisms for ensuring the rights of IDPs in the context of national security protection and deepening European integration of Ukraine (Buletsa *et al.*, 2017). In 2022, specialised organisations and experts focused on summarising European standards useful for assessing Ukraine's legislative framework for the protection of IDPs.

As early as the beginning of the 21st century, scientific studies (Castles, 2010; Castles *et al.*, 2013) demonstrated that the growth of migration processes is one of the reasons for the complication of the situation for temporarily displaced persons. An increase in the number of migrants leads to an increase in demand for housing and social support, which complicates housing affordability. In this regard, the development of effective strategies and policies for organising the territory (residential environment) for temporarily displaced persons requires considering migration processes as one of the aspects of this issue and accommodating their specific features when making urban planning decisions.

The category of temporariness in the context of philosophical principles. One of the central concepts applied in relation to IDPs within the framework of the UNHCR approach in Ukraine is “durable solution”. A durable solution to IDP problems is considered a situation where the needs and threats associated with displacement disappear (Titar, 2016). Notably, the issue of housing for IDPs in Lviv is

viewed as a “temporary phenomenon”, requiring time-limited measures to stabilise the situation. Therefore, it is relevant to analyse the category of temporariness in a philosophical context, as this will allow reflecting the essence of the problem in the long term.

In literature, the term “temporary” is applied to various objects, including things, situations, and events that have an impermanent nature, do not last long, or are not intended to last long. It has numerous synonyms, which are determined by diverse contexts and ways of use (Cambridge Dictionary, n.d.). In philosophical discourse (Bedoya, 2004; Hawley, 2004), the term “temporary” can be replaced with “transitional”, “fleeting”, “ephemeral”, or “short-lived”, while in the context of technical systems, words like “portable”, “mobile”, or “movable” are used. Thus, the definition of temporary may vary depending on the discipline and context of its use.

Throughout different historical epochs, many people have observed the impermanence of the world as a constant phenomenon. This observation was characteristic not only of ancient Eastern philosophy of the 6th-5th centuries BC but also of the Romantic era (Hajjari & Sarvestani, 2017), which was characterised by emotionalism, individualism, and expressiveness in the creation of artistic works (Encyclopædia Britannica, n.d.). Within the phenomenological tradition, the thesis was analysed that temporality is time that manifests itself in human existence and is its subjective experience (Hoy, 2009). For the ancient Greeks, time was closely related to natural phenomena, such as the movement of the sun or the change of seasons, rather than abstract concepts as in the modern world. Therefore, something temporary for them meant a natural and limited span of existence, not something artificially created or forced (Martineau, 2020). Philosophers Henri Bergson (Price, 2019) and Gilles Deleuze (Jancsary, 2019) argued that the world consists of a stream of energy that constantly flows and transforms. There is nothing in it that can be identified as stable, substantial, or essential. Therefore, the apparent stability and strength of the world are illusory, and the only reality is the process of change and becoming.

Temporality, as a philosophical category, is linked to the concept of time and its perception. However, in the context of the prolonged war in Ukraine, its understanding takes on new characteristics. Internal displacement, particularly as a result of the full-scale military invasion, is marked by unpredictability and the rapid destruction of urban spaces in the affected areas. This calls into question the conventional interpretation of temporality as a short-term situation, as the housing needs of IDPs may not align with the anticipated timeframes for their return to their original places. Therefore, temporality, in the context of housing solutions for IDPs, becomes a more flexible and long-term process that depends not only on time but also on a range of interconnected factors, including social, economic, and infrastructural conditions. In this context, temporality refers to the need for organising housing for the time being, until the conditions for permanent residence and





integration into an unfamiliar environment are created, which may take much longer than conventionally expected.

Temporary housing in the city: typological features. The housing strategy immediately after the displacement of IDPs should provide solutions for emergencies as well as more long-term solutions over time. Its organisation cannot be considered in isolation; any response must factor in the locality or context (The UN Refugee Agency, 2024). The problem of providing adequate living conditions for IDPs is one of the central issues that arose in 2014 and became particularly relevant in 2022 due to the open full-scale armed aggression against Ukraine. Considering the need for prompt action on the existing issue, the organisation of temporary housing is the most effective and immediate measure to ensure necessary living conditions (Johnson, 2007). In Lviv, this included the construction of temporary buildings – so-called mobile settlements, providing rental housing in apartment buildings and the private sector, as well as in hotels, motels, or campsites, along with the organisation of hostels and shelters. Thus, the organisation of temporary housing for IDPs became a moment when uncertainty transformed into confidence, allowing families to feel safe and gain social recognition (Bedoya, 2004).

In the context of increasing political conflicts and negative consequences of climate change, an increase in demand for temporary housing is observed. This contributes to the deepening of scientific discourse (Albadra *et al.*, 2018), which considers a wide range of ecological, economic, social, technical, moral, and other characteristics. Mostly, they are based on research on shelters and housing in post-crisis situations (Davis, 1978; Quarantelli, 1995). Within this discourse, many theoretical problems related to the definition of concepts (Pezzica *et al.*, 2018) and typological characteristics are being addressed, including structural-spatial (Stocker *et al.*, 2021), socio-economic and temporal (Johnson, 2009), quantitative (Kronenburg, 2014), and other features.

The problem of terminological nature is being addressed by clarifying existing definitions and expanding the established terminology (Pezzica *et al.*, 2018). M. Stocker *et al.* (2021) proposed a classification focused on temporal, technical, and technological aspects. It offers a more detailed consideration of the functional and spatial features of the territorial organisation of such types of residential objects. In the end, the researchers identified two formations, four classes, fifteen orders, twenty-two alliances, and twenty-six types. The key feature for structuring various residential formations was the “foundation” – the element that transfers loads from the building to the ground.

C. Johnson (2009) provided a definition of “temporary housing” that can help to obtain an extended understanding of the specificities of its functioning and organisation. The researcher considered temporary housing as a unit that allows for the restoration of everyday activities and distinguishes it, depending on the stage and state of the situation where a specific problem is being addressed. In her arguments, C. Johnson accounted for the need to

differentiate concepts such as emergency sheltering, temporary sheltering, temporary housing, and permanent housing, proposed earlier by E.L. Quarantelli (1995). The first stage is an emergency situation, where emergency shelters are deployed; the second is temporary sheltering, which is formed; the third is planned living for a period of six months to three years, which is organised through temporary housing; and the fourth is the move to rebuilt or new permanent housing. According to this understanding, temporary housing is described as an object that represents a physical structure where people live after a disaster; a part of a housing recovery programme after a disaster; and a place that serves as a shelter for people during the period from the disaster until they are resettled in a permanent place of residence (Félix *et al.*, 2013). Such a classification is based on socio-economic factors and an understanding that distinct types of temporary housing can be applied depending on the situation. This approach helps to manage the housing recovery process and ensures the efficient use of resources and efforts.

Features of organising mobile settlements in Lviv. During 2022, four modular settlements were opened in Lviv. They are located on a territory consisting of residential blocks, utility zones, and specially equipped places for recreation for adults and children. Modular settlements are a general term used to describe modern solutions for the rapid and efficient placement of residential modules on limited land plots. Residential modules, which are the basic element of such settlements, have a temporary nature and consist of small blocks mounted on the basis of panel systems kits, which represent one of the forms of modular constructions (Seidu *et al.*, 2021). Components that comprise modular settlements are small, light, and easy to handle, making them convenient for transportation and local assembly (Félix *et al.*, 2013).

The blocks, which are the main structural elements of the mobile settlements, have a standard size and are equipped with all the necessary components. Their composition is based on modularity as an innovative concept that involves creating full-fledged structures. To obtain more complex structures, they can be arranged in any desired order. In the 21st century, modularity is increasingly being used worldwide, particularly in the construction and public sectors. Examples include student dormitories, private and social housing, hotels, military housing, healthcare buildings, educational buildings, prisons, production facilities, and bathrooms (Lawson *et al.*, 2014). Modular construction is widely promoted as the future of the construction industry, as it promises to offer a better advantage over conventional construction in terms of speed, quality, and cost (Seidu *et al.*, 2021).

According to the classification by C. Johnson (2009), modular settlements in Lviv, organised with the consideration of the specific needs of IDPs, correspond to the third stage. Such settlements are a place where planned residence is provided for a period of six months to three years. During the analysis of the classification by

M. Stocker *et al.* (2021), some inconsistencies were found. They are related to the specific features of the structural organisation of the modular settlement in Lviv. According to the classification, it belongs to the first type of demountable housing environments of planned temporary presence (F1) and the first class – accommodations without foundations intended for residential use (C1). However, the characteristics of the examples used to identify the first class, such as tents, cabins, and mobile homes (on wheels or

water), do not correspond to the real situation in Lviv. Here, residential blocks can be characterised as multi-apartment buildings without foundations, which are not provided for in this classification.

Modular settlements in the structure of the city of Lviv. Modular settlements for IDPs in Lviv have become a significant solution in the field of residential construction and development of the city's social infrastructure (Press service of the Lviv City Council, 2023) (Fig. 1).

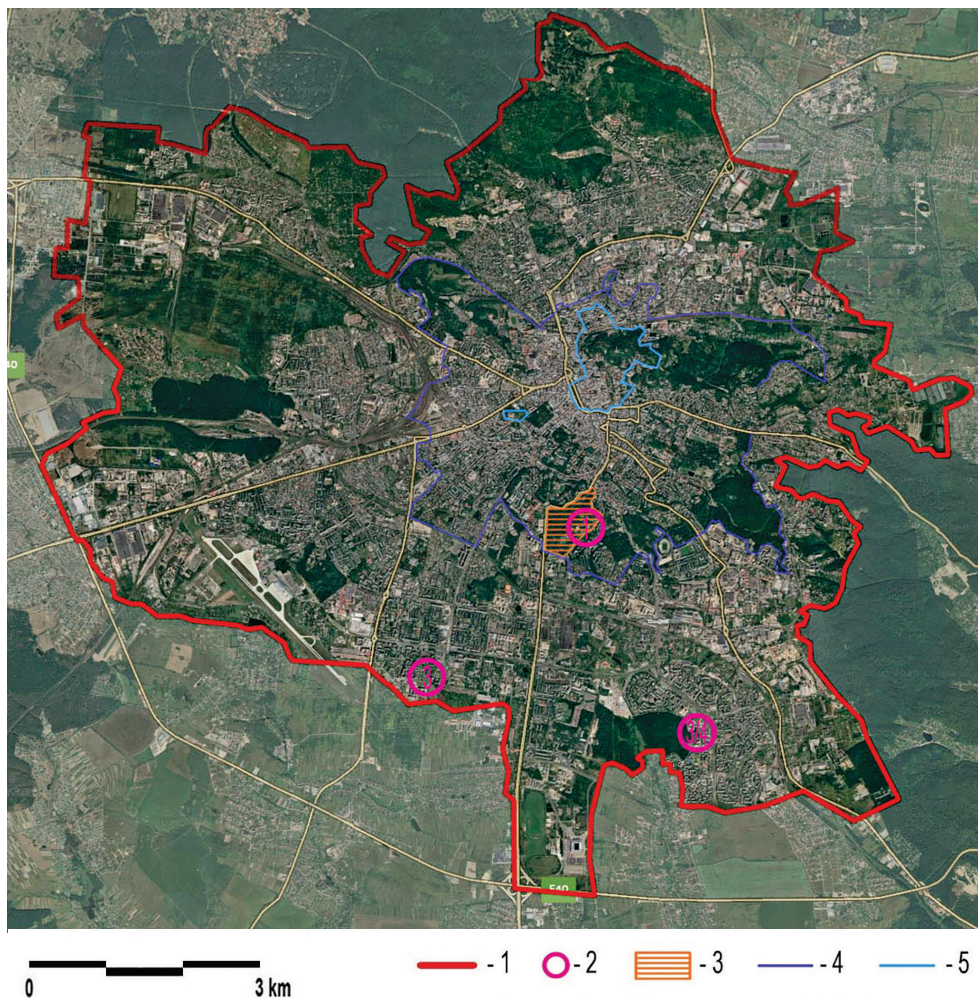


Figure 1. Placement of modular settlements in various parts of Lviv and in the context of different component

Notes: I – first modular settlement, city park area; II – second modular settlement, residential quarter; III – third modular settlement, private territory; IV – winter modular settlement; 1 – administrative city boundaries; 2 – modular settlements; 3 – territory of Stryiskyi Park; 4 – boundaries of the historical area; 5 – territory under the protection of UNESCO

Source: developed by the author of this study

In April 2022, with the support of the Polish government, the first modular settlement was opened in the Stryiskyi Park in Lviv, designed for 350 residents. It consisted of 88 modular houses with a separate kitchen, bathrooms, showers, and a laundry room (Hryniuk, 2023). The territory of the settlement covers about 0.2 hectares. It is fenced and equipped with necessary infrastructure facilities, such as electricity, water supply, sewerage, air conditioning system, as well as playgrounds for adults and children.

Notably, the territory of Stryiskyi Park is a monument of landscape art of national significance, located in the central part of Lviv and covers an area of 51.4 hectares (Lviv City Council, n.d.). For the city residents, it is not just a place of rest and recreation, but an integral part of the urban history, preserving a unique natural and cultural heritage. Specifically, there are monuments of landscape art and historical objects concentrated here, which became symbols of Lviv: the lower terrace, formed according to the

principles of a picturesque landscape park; the upper terrace, arranged for the Regional Exhibition of 1894, has a regular structure (Maksymiuk, 2008; Zhuk, 2012). According to the law, construction, recreational, and other activities that may lead to disturbance of natural processes and a decrease in the natural value of objects are prohibited on the territory (Law of Ukraine No. 2456-XII, 1992). Later, analogous settlements were deployed on Puliuia Street and in Sykhiv. In total, over 1,000 forced migrants from different regions of Ukraine were resettled there (Hryniuk, 2023).

The second modular settlement appeared on Puliuia Street. It covers approximately 0.6 hectares with a total of 120 houses and a capacity of 320 people (Press service of the Lviv City Council, 2022). Like in the previous version, the territory is fenced and equipped with necessary infrastructure facilities. The specified territory is an example of extensive urban development that took place in the 1960s-1980s. It was initiated by the state in response to a dramatic housing shortage and later built with hundreds of homogeneous residential units. The evaluation of the

success or failure of residential formations depended not only on their physical structure but also on the formation of the ideological significance of the modernist residential formation and its perception by experts from various fields, including politicians, ideologists, urban planners, and residents themselves. The results of the study by O. Chabaniuk (2004) revealed that such areas have a series of negative characteristics: low level of social control over the territory of residential areas, insufficient safety of living, emptiness and transitivity of intra-block spaces, functional conflict of the environment, lack of personalisation of the space around buildings, and a low level of psychological comfort of living. Since 2010, these areas are undergoing transformation and the formation of a new identity (Mysak, 2014).

The third modular settlement is located in Sykhiv with a total of 94 houses and a capacity of 300 people. The land where the town is located belongs to the Order of the Salesians of St. John Bosco, Ukrainian Greek Catholic Church. Representatives of the church expressed a desire to take the town under their spiritual care and become its patrons (Fig. 2).



Figure 2. Third modular town in Lviv

Notes: a – general view; b – view of the multifunctional recreational centre

Source: photo by Roman Kaiman (Press service of the Lviv City Council, 2022)

The area of the land plot is approximately 0.7 hectares. As in the previous version, the territory is equipped with necessary infrastructure facilities, as well as a children's and sports playground. With the arrival of cold weather, the issue of heat preservation arose, as the residents, mostly women with children and elderly people, needed warm accommodation. Therefore, in Lviv, a modular settlement was deployed on Sykhiv, near the third quarter, called the "winter" settlement. However, temporary housing in the territory of the Stryiskyi Park, Puliuia Street, and the Salesian Fathers of St. John Bosco Congregation was temporarily "conserved". It is the largest of all existing settlements in Lviv and can accommodate 1,400 people. In total, there are eight two-story buildings on the site, each consisting of 80 modules (Hryniuk, 2023).

"Sykhiv", where the third and later the "winter" settlement were initially located, is a planning district of Lviv that began to take shape in the 1970s and 1980s. With the onset of Ukraine's independence, there were significant transformations in urban planning. As a result, the district changed its structure and was supplemented with new

functions. Starting from the 21st century, the territory was in a state of intensive development and transformation. In the 2020s, Sykhiv district continued to be the largest in Lviv. One out of five residents in Lviv lives in this district and identifies with this area (Cherkes & Mysak 2013). Having undergone a change in ideological foundations and developed in architectural, ecological, economic, historical, cultural, educational, social, tourist, and other areas, it became a fully-formed entity with a functional-planning structure and unique identity.

Modular settlements became a noticeable element of the already-developed urban environment in various regions of Ukraine. They are implemented through donor funds from government and international organisations, as well as Ukrainian and foreign companies. For instance, through the initiative and cooperation with Polish partners, four modular settlements were arranged in Lviv since April 2022. The example of Lviv showed that the implemented programme became a flexible and effective tool for addressing urgent issues of temporary housing for IDPs. Due to the growing demand, the issue of temporary



housing and modular settlements is becoming increasingly relevant and actively discussed in international communities among theorists and practitioners. This is done to develop effective strategies and recommendations for creating temporary housing facilities and their management in the context of socialising IDPs and refugees (UNECE, 2021).

To better understand and address such problems, a scientific debate has risen to a new level of research regarding the correctness of the use of the term “temporary housing” and other aspects related to this concept. In the present study, the author used studies where the terminology was under special scrutiny. Thus, C. Pezzica *et al.* (2018) emphasised that the term “temporary housing” does not always accurately reflect the essence of the problem. In her arguments, the researcher relied on the findings of I. Davis (1978) and E.L. Quarantelli (1995), the authors of one of the first theoretical studies on shelters and housing in post-crisis situations. E.L. Quarantelli (1995) emphasised the ambiguity and inconsistency in the use of the terms “shelter” and “housing” in the literature. In turn, I. Davis (1978) emphasised that the term “temporary houses” falls within the purview of politicians, slick salesmen, and some officials who provide assistance. In Quarantelli’s opinion, solving the problems should not be limited to a narrow circle of specialists and any donor should be aware of the long-term consequences of their actions. C. Johnson (2009) defended the same opinion and proposed to consider temporary housing as a transitional and short-term process aimed at restoring or obtaining permanent housing.

A special place in the declared problematic is occupied by the definition of the essence of concepts related to the category of temporariness. The concept of temporariness is based on philosophical and worldview approaches and is substantiated by understanding the temporary as a transitional and non-permanent phenomenon, which is determined by the temporal factor. The classification issue continues to be understudied. For example, C. Johnson (2009) and M. Stocker *et al.* (2021), while systematising their own empirical material, relied on the conclusions of E.L. Quarantelli (1995). It should be recalled that the author proposed to distinguish between different forms of temporary housing depending on the stage and condition of the situation that requires solving a certain problem. Analysis of such literature (Johnson, 2009; Stocker *et al.*, 2021) and available catalogues (The UN Refugee Agency, 2024) revealed that the systematic basis for classifying different types of temporary housing includes such features as building material, building structure, capacity, mobility, and type of engineering networks. They fall within the scope of architecture and construction. Classifications based on structural features help standardise terminology and provide a collective understanding of the terms and concepts used when discussing temporary housing. Despite expanded classifications (Johnson 2009; Stocker *et al.*, 2021), they are not universal and require further clarification to accommodate the context of concrete places and their specificity. To specify, residential modules in Lviv can be characterised as

multi-apartment buildings without a foundation, designed for short-term residence.

Within the competence of urban planners, there are several issues related to effective ways and approaches to organising temporary housing at the territorial level and their connection to the already formed material-spatial environment of human life. The absence of such knowledge, norms, and standards raises doubts about the safety and comfort of living not only for the residents of the created housing environment (e.g., in Lviv’s Sykhiv or the Puliuiia Street area) but also for the residents of new structures. Studying this spectrum of issues can help researchers, policymakers, and practitioners to identify the strengths and weaknesses of each type of temporary housing and develop effective models for its territorial organisation in the context of the created housing environment. This falls within the scope of urban and social issues.

The city planning element. Modular settlements, like any other form of temporary housing, can have a crucial role in the urban environment, especially in situations where the availability of quickly deployable mobile structures is necessary, such as during emergencies that force people to leave their homes or during mass events. The experience of organising modular settlements in Lviv showed that compact organisation of the territory is an effective solution that contributes to achieving maximum functionality and comfort. This effect was achieved by implementing the following principles:

- zoning: the territory is divided into distinct zones depending on their purpose (e.g., residential, technical, recreational). This allows optimising the use of space;
- use of multifunctional spaces and organisation of green areas: the territory is designed considering the possibility of using the created space for various functions at different times of the day;
- application of the principle of pedestrian accessibility: the choice of the territory was made considering the possibility of ensuring pedestrian accessibility to key objects (such as public centres of social security, cultural and spiritual centres, entertainment centres, public spaces, educational and preschool institutions).

Social element. A prominent aspect of successful socialisation of IDPs lies in providing conditions for free choice and access to various social groups, including those that are already developed. This requires the application of a social approach and careful study of the specific features of social relations, which are based on intuition, interdependence, and interrelatedness among various individuals, not just among IDPs. One of the means of implementing such an approach is a theoretical model (Idak, 2022) built on the principle of a three-tier hierarchical organisation of the urban environment:

- the first tier – micro-level, describes an individual’s private space that functions only with their participation, e.g., a living room;
- the second tier – meso-level, describes the private space of a certain social group to which the individual feels





a sense of belonging and identifies as their own. Social control takes place here, which is guided by a certain set of rules and standards, limiting certain actions of the individual, but directing them towards the acquisition of clear cultural norms and the choice of a social role. This tier can represent a residential building or neighbourhood;

- the third tier – macro-level, describes a public space that belongs to the community or is available for use by different social groups, e.g., a city district or settlement.

It should be emphasised that the organisation of modular towns requires a separate approach in relation to an already formed urban environment. It is vital to consider compatibility with urban development and infrastructure, as well as probable consequences for adjacent areas and residents. It is also necessary to have an adequate legislative and regulatory framework to ensure safety and housing quality in modular towns, as well as to ensure legal protection for their residents.

Finally, modular settlements are not always harmoniously integrated into the existing urban environment. Their placement can disrupt the ecological balance and create transportation and other problems. Furthermore, modular settlements are often promoted as temporary territorial objects, which can lead to careless preservation and maintenance, which can subsequently affect the environment and reflect on the overall quality of life of local residents. To harmonise the organisation of the living environment, it is also essential to consider the principles of ecology and sustainable development.

Despite their significance, the solutions that were implemented in Lviv have both positive and negative aspects. Research revealed that negative aspects are caused by a misunderstanding of basic categories and the absence of a regulatory framework when decisions must be made promptly. When making decisions regarding the placement of modular settlements, it is vital to apply a comprehensive approach to design and strike a balance between social needs and the preservation of the urban environment to ensure proper city development and comfortable living for all its inhabitants. A comprehensive approach may include not only the placement of modular settlements but also the creation of multifunctional structures that positively influence the city's development and provide the opportunity to gain social experience and establish social connections for its participants. This assumption expands the understanding of the problem of forming temporary residential environments for IDPs and the possibilities for its solution without interfering with the already developed material and spatial environment of human life.

CONCLUSIONS

The creation of temporary housing for IDPs involves a wide range of problems that affect the experience of various fields of activity, including architecture, urban planning, and sociology as interrelated and complementary scientific disciplines. The following problems can be identified: consistency in terminology for designating

and describing key concepts for research; in-depth understanding of temporary housing, its characteristics and interactions with other categories; inconsistencies in existing typological classifications of temporary housing; consideration of urban planning components when organising modular settlements for IDPs; absence of comprehensive approaches to the formation of the urban environment in unforeseen situations. The temporariness was updated as a significant category of various spheres of human life, which necessitates planning and organisation for successful adaptation to changes.

The term “temporary housing” and approaches to its classification were explored. It became clear that this concept should not be regarded as an object. Instead, it is a process aimed at a certain degree of certainty and happens only once. Here, resources and opportunities become decisive. Therefore, an effective mechanism that proposes an algorithm of actions and a universal concept for solving problems related not only to the formation of housing as a unit, but also to the creation of a proper living environment, appears prudent. It was noted that existing classifications are incomplete and unable to cover all possible options. For example, temporary housing in the modular settlements of Lviv does not fit into any existing type, suggesting the need to create new classifications or improve the existing ones. There are also no classifications regarding the organisation of temporary housing at the territorial level.

A formal approach was applied to the territorial organisation of four modular settlements in Lviv and the specific features of their functioning and interaction with the surrounding environment were determined. The specific experience gained in Lviv provides valuable insights and lessons for other cities and regions facing comparable challenges. Both successes and negative impacts are present here. Success is associated with the development of a reliable basis for an effective strategy for solving housing problems for IDPs. To achieve maximum functionality and comfort, the territory of the modular settlements in Lviv is compactly organised. The zoning principle and the formation of multifunctional spaces and green areas, as well as pedestrian accessibility, are implemented here. This can ultimately lead to more equitable solutions for IDPs and contribute to the overall development and sustainability of cities.

The project of modular neighbourhoods in Lviv demonstrated its effectiveness and potential for development. Specifically, it was successfully used to address the urgent problem of providing housing for the local population in the short term. However, considering the long-term perspective, questions arise concerning the project's controversial aspects, such as environmental sustainability and integration with the existing urban environment. Therefore, the negative aspects are driven by the absence of a legal framework for shaping the living environment in crisis situations and the created urban environment. Modular neighbourhoods in Lviv are organised in areas with certain characteristics. These characteristics express



a unique context that is present in each specific situation. It is expressed through the historical, natural, and heritage categories. Theoretical research should be further developed to increase the depth and volume of knowledge about the problem under study, identify certain regularities in approaches to providing temporary housing, and develop new principles for its organisation at the territorial level.

None.

None.

None.

ACKNOWLEDGEMENTS

FUNDING

CONFLICT OF INTEREST

REFERENCES

- [1] Albadra, D., Coley, D., & Hart, J. (2018). Toward healthy housing for the displaced. *Journal of Architecture*, 23(1), 115-136. doi: [10.1080/13602365.2018.1424227](https://doi.org/10.1080/13602365.2018.1424227).
- [2] Bedoya, F.G. (2004). Provisional habitat and dwelling for emergencies. *Tabula Rasa*, 2, 145-166. doi: [10.25058/20112742.211](https://doi.org/10.25058/20112742.211).
- [3] Borysenko, V. (2023). Adaptation processes among internally displaced persons in Ukraine during the Russia-Ukraine War in the 21st century. *Folk Art and Ethnology*, 4(400), 29-38. doi: [10.15407/nte2023.04.029](https://doi.org/10.15407/nte2023.04.029).
- [4] Buletsa, S., et al. (2017). *The mechanism for ensuring the rights of internally displaced persons: National and international aspects*. Uzhhorod: RIK-U.
- [5] Cambridge Dictionary. (n.d.). *Review of "Temporary"*. Retrieved from <https://dictionary.cambridge.org/thesaurus/articles/temporary>.
- [6] Castles, S. (2010). Understanding global migration: A social transformation perspective. *Journal of Ethnic and Migration Studies*, 36(10), 1565-1586. doi: [10.1080/1369183x.2010.489381](https://doi.org/10.1080/1369183x.2010.489381).
- [7] Castles, S., de Haas, H., & Miller, M.J. (2013). *The age of migration: International population movements in the modern world*. New York: The Guilford Press.
- [8] Chabaniuk, O. (2004). *Review of regeneration of the residential environment of high-rise buildings in the 1970s and 1980s (on the example of Lviv)*. (Doctoral thesis, Lviv Polytechnic National University, Lviv, Ukraine).
- [9] Cherkes, B., & Mysak, N. (2013). *Development and transformation of the Sykhiv residential district in Lviv*. *Bulletin of the Lviv Polytechnic National University. Series: Architecture*, 757, 54-61.
- [10] Council of Europe. (2006). *Recommendation Rec (2006) 6 of the Committee of Ministers of the Council of Europe to member states on internally displaced persons*. Retrieved from <https://rm.coe.int/16806b5ab1>.
- [11] Davis, I. (1978). *Shelter after disaster*. Oxford: Oxford Polytechnic Press.
- [12] Encyclopædia Britannica. (n.d.). *Review of "Romanticism"*. Retrieved from <https://www.britannica.com/art/Romanticism>.
- [13] Etzold, B., et al. (2022). Nothing is more permanent than the temporary – understanding protracted displacement and people's own responses. *Zenodo*. doi: [10.5281/zenodo.6490951](https://doi.org/10.5281/zenodo.6490951).
- [14] Félix, D., Branco, J.M., & Feio, A. (2013). Temporary housing after disasters: A state of the art Survey. *Habitat International*, 40, 136-141. doi: [10.1016/j.habitatint.2013.03.006](https://doi.org/10.1016/j.habitatint.2013.03.006).
- [15] Hajjari, L., & Sarvestani, Z.S. (2017). Impermanence / mutability: Reading Percy Bysshe Shelley's poetry through Buddha. *Littera Aperta. International Journal of Literary and Cultural Studies*, 5, 19-37. doi: [10.21071/ltap.v5i5.13320](https://doi.org/10.21071/ltap.v5i5.13320).
- [16] Hawley, K. (2004). *Temporal parts*. Retrieved from <https://plato.stanford.edu/archives/spr2023/entries/temporal-parts/>.
- [17] Ho, E.L.-E. (2021). Social geography I: Time and temporality. *Progress in Human Geography*, 45(6), 1668-1677. doi: [10.1177/03091325211009304](https://doi.org/10.1177/03091325211009304).
- [18] Hoy, D.C. (2009). *The time of our lives*. Cambridge, London: MIT Press.
- [19] Hryniuk, L. (2023). *Temporary life in a modular town: Here everyone is waiting to go home tomorrow*. Retrieved from <https://surl.lu/svvjxl>.
- [20] Idak, Yu. (2022). A vision for recovery models of Ukrainian cities. *Journal of Public Governance* 59(1), 53-64. doi: [10.15678/PG.2022.59.1.06](https://doi.org/10.15678/PG.2022.59.1.06).
- [21] Idak, Yu., & Frankiv, R. (2022). Gated communities in Lviv: Between social demand and spatial limitation. *Spatium*, 48, 22-29. doi: [10.2298/SPAT220703011I](https://doi.org/10.2298/SPAT220703011I).
- [22] International Organization for Migration (IOM). (2023). *Review of Ukraine crisis 2022-2023: 1 year of response*. Retrieved from https://www.iom.int/sites/g/files/tmzbd1486/files/documents/2023-02/IOM_Ukraine_Regional_Response-1_Year_Special_Report.pdf.
- [23] Jancsary, J. (2019). The future as an undefined and open time: A Bergsonian approach. *Axiomathes*, 29(1), 61-80. doi: [10.1007/s10516-017-9364-0](https://doi.org/10.1007/s10516-017-9364-0).
- [24] Jayakody, C., Malalgoda, C.I., Amaratunga, D., Haigh, R., Liyanage, C., Hamza, M., Witt, E., & Fernando, N. (2022). Addressing housing needs of the displaced people promoting resilient and sustainable communities. *International Journal of Disaster Resilience in the Built Environment*, 13(3), 368-385. doi: [10.1108/ijdrbe-09-2021-0124](https://doi.org/10.1108/ijdrbe-09-2021-0124).





- [25] Johnson, C. (2007). Strategic planning for post-disaster temporary housing. *Disasters*, 31(4), 435-458. doi: 10.1111/j.1467-7717.2007.01018.x.
- [26] Johnson, C. (2009). *Planning for temporary housing*. In G. Lizarralde, C. Johnson & C. Davidson (Eds.), *Rebuilding after disasters: From emergency to sustainability* (pp. 70-87). London, New York: Spon Press.
- [27] Kostyk, A. (2022). *New temporary housing for displaced persons arranged in Lviv*. Retrieved from https://tvoemisto.tv/news/u_lvovi_vidkryly_novyy_shelter_dlya_pereselentsiv_139562.html.
- [28] Kronenburg, R. (2014). *Architecture in motion: The history and development of portable building*. London, New York: Routledge; Taylor & Francis Group.
- [29] Law of Ukraine No. 1706-VII "On Ensuring the Rights and Freedoms of Internally Displaced Persons". (2014, October). Retrieved from <https://zakon.rada.gov.ua/laws/show/1706-18#Text>.
- [30] Law of Ukraine No. 2456-XII "On Nature Reserve Fund of Ukraine". (1992, June). Retrieved from <https://zakon.rada.gov.ua/rada/show/2456-12?lang=en#Text>.
- [31] Lawson, M., Ogden, R., & Goodier, C. (2014). *Design in modular construction*. London: CRC Press. doi: 10.1201/b16607.
- [32] Lviv City Council. (n.d.). *Park map*. Retrieved from <https://surl.li/benijh>.
- [33] Maksymiuk, T. (2008). Garden and park architecture. Historicism architecture (40-90s of the 19th century). In Y. Biryuliov (Ed.), *Architecture of Lviv: Time and styles. 18th-19th centuries* (pp. 367-377). Lviv: Center of Europe.
- [34] Martineau, J. (2020). Aristotle, Augustine and Ricoeur's Aporetics of temporality in context. *Études Ricoeuriennes / Ricoeur Studies*, 11(2), 53-68. doi: 10.5195/errs.2020.507.
- [35] Mitchell, K. (2022). Migration, memory, and the insurgent temporalities of sanctuary. *Geografiska Annaler: Series B, Human Geography*, 105(2), 179-192. doi: 10.1080/04353684.2022.2150672.
- [36] Mysak, N. (2014). *Soviet mass housing construction: Transformations in the process of changing contexts*. *Urban Development and Spatial Planning*, 53, 339-350.
- [37] Official website of the UNICEF in Ukraine. (2023). *Mobile experts help youth tackle trauma of war*. Retrieved from <https://www.unicef.org/ukraine/en/stories/mobile-experts-help-youth-tackle-trauma>.
- [38] Official website of the World Health Organization. (n.d.). Retrieved from <https://www.who.int/>.
- [39] Panchenko, O. (2022). *Where to settle the people left without homes due to the war. We ask architects*. Retrieved from <https://www.the-village.com.ua/village/city/architecture/324679-kudi-poseliti-lyudey-scho-zalishilisy-bez-domivok-cherez-vyynu-zapituemo-arhitektoriv>.
- [40] Paraskeva, K. (2017). *Protection of internally displaced persons according to the European Convention on Human Rights and other standards of the Council of Europe: Handbook*. Kharkiv: Pravo.
- [41] Patel, R., Sanderson, D., Sitko, P., & De Boer, J. (2020). Investigating urban vulnerability and resilience: A call for applied integrated research to reshape the political economy of decision-making. *Environment and Urbanization*, 32(2), 589-598. doi: 10.1177/0956247820909275.
- [42] Pezzica, C., Cutini, V., & de Souza, C.B. (2018). *Transitional housing: An update on sustainability challenges and research opportunities*. In 2nd OIKONET postgraduate seminar. Lisbon: ISCTE-IUL.
- [43] Pleshkanovska, A., Yatsenko, V., Berova, P., & Filvarova, N. (2024). Reconstructive activity in the context of urban life cycle phases. The case of Ukrainian cities. *ACE Arquitectura Ciudad y Entorno*, 18(54), article number 12127. doi: 10.5821/ace.18.54.12127.
- [44] Press service of the Lviv City Council. (2022). *In Lviv, a third modular town for displaced people was opened in Sykhiv*. Retrieved from <https://city-adm.lviv.ua/news/society/social-sphere/291600-u-lvovi-na-sykhovi-vidkryly-tretie-modulne-mistechko-dlia-pereselentsiv>.
- [45] Press service of the Lviv City Council. (2023). *Instead of three – one winter: How the residents of the largest modular town in Lviv live (video)*. Retrieved from <https://city-adm.lviv.ua/news/society/social-sphere/295190-zamist-trokh-odne-zymove-iak-zhyvut-meshkantsi-naibilshoho-u-lvovi-modulnoho-mistechka-video>.
- [46] Press service of the Lviv Regional State Administration. (2022). *In the Lviv region, the first modular town was opened, where resettlers will live*. Retrieved from <https://old.loda.gov.ua/news?id=67178>.
- [47] Price, G. (2019). "Accursed Time": Gilles Deleuze's *Difference and Repetition* and John McGahern's *That They May Face the Rising Sun*. *Études Irlandaises*, 44(2), 95-111. doi: 10.4000/etudesirlandaises.8382.
- [48] Quarantelli, E.L. (1995). Patterns of sheltering and housing in US disasters. *Disaster Prevention and Management*, 4(3), 43-53. doi: 10.1108/09653569510088069.
- [49] Resolution of the Cabinet of Ministers of Ukraine No. 495 "Some Measures for the Formation of Housing Funds for Temporary Accommodation of Internally Displaced Persons". (2022, April). Retrieved from <https://www.kmu.gov.ua/npas/devaki-zahodi-z-formuvannya-fondiv-zhitla-priznacheno-go-dlya-timchasovogo-prozhivannya-vnutrishno-peremishchenih-osib-495>.
- [50] Seidu, R.D., Young B.E., Thayaparan, M., & Appiah-Kubi, J. (2021). *Modular construction innovation in the UK: The case of residential buildings*. In *Proceedings of the international conference on industrial engineering and operations management*. Dubai: IEOM Society International.



- [51] Senkiv, Z. (2021). Evaluation of the phenomenon of spatial segregation in Lviv: Historical aspect. *Bulletin of Lviv Polytechnic National University – Series of Architecture*, 3(2), 79–83. doi: [10.23939/sa2021.02.079](https://doi.org/10.23939/sa2021.02.079).
- [52] Sisson, A. (2021). Territory and territorial stigmatisation: On the production, consequences and contestation of spatial disrepute. *Progress in Human Geography*, 45(4), 659–681. doi: [10.1177/0309132520936760](https://doi.org/10.1177/0309132520936760).
- [53] Stocker, M., Schneider, G., Zeilinger, J., Rose, G., Damyanovic, D., & Huber-Humer, M. (2021). Urban temporary housing environments – from a systematic comparison towards an integrated typology. *Journal of Housing and the Built Environment*, 36(4), 1457–1482. doi: [10.1007/s10901-020-09812-x](https://doi.org/10.1007/s10901-020-09812-x).
- [54] Tefera, G.W., & Gamlen, A. (2024). Temporal logics in geographical research on migration and refugees. *Progress in Human Geography*, 48(6), 861–878. doi: [10.1177/03091325241282023](https://doi.org/10.1177/03091325241282023).
- [55] The real number is twice as high. Kozitsky named the number of migrants in Lviv region. (2023). Retrieved from https://tvoemisto.tv/news/realna_tsyfra_vdvichi_bilsha_kozytskyi_nazvav_kilkist_vymushenyh_pereselntsyv_na_lvivshchyni_142929.html.
- [56] The UN Refugee Agency. (2024). *Strategic considerations in shelter responses*. Retrieved from <https://cms.emergency.unhcr.org/documents/11982/57181/Shelter+Design+Catalogue+January+2016/a891fdb2-4ef9-42d9-bf0f-c12002b3652e>.
- [57] Titar, I. (2016). [Concepts and criteria of adaptation and integration of internally displaced persons and conditions for cancelling the status of a displaced person](https://doi.org/10.1007/s10901-020-09812-x). *Ukrainian Society*, 4(59), 57–68.
- [58] United Nations Economic Commission for Europe (UNECE). (2021). *Housing for migrants and refugees in the UNECE region: Challenges and practices*. Retrieved from https://unece.org/sites/default/files/2021-02/Housing%20for%20Migrants_compressed_0.pdf.
- [59] Ustinova, I., & Pleshkanovska, A. (2023). Urbicide and post-war restoration of residential development in cities of Ukraine: Experience and prospects. *Grail of Science*, 23, 463–471. doi: [10.36074/grail-of-science.23.12.2022.82](https://doi.org/10.36074/grail-of-science.23.12.2022.82).
- [60] Yatsenko, V., Osychenko, H., Dreval, I., & Tyshkevych, O. (2024). Preservation of the urban historical landscape as a response to the challenges of war. *International Journal of Conservation Science*, 15(S1), 141–156. doi: [10.36868/ijcs.2024.si.12](https://doi.org/10.36868/ijcs.2024.si.12).
- [61] Zhuk, I. (2012). *Stryiska Str. – Stryisky Park*. Retrieved from <https://lia.lvivcenter.org/uk/objects/park-stryiskyi/>.

Юлія Ідак

Доктор архітектури, професор
Національний університет «Львівська політехніка»
79000, вул. Степана Бандери, 12, м. Львів, Україна
<https://orcid.org/0000-0002-1123-5759>

Виклики міського розвитку у забезпеченні тимчасовим житлом внутрішньо переміщених осіб: досвід міста Львів

Анотація. Це дослідження висвітлює суперечності, що виникають при вирішенні житлових потреб внутрішньо переміщених осіб, та проаналізувало їхній вплив на сталий розвиток міста. Метою цього дослідження було виявити проблеми містобудування, спричинені створенням модульних поселень у вже розвиненому міському середовищі Львова, де у 2022 році було організовано чотири таких поселення, та оцінити їхній вплив на міську структуру та сталий розвиток. Для досягнення мети дослідження було застосовано теоретичні методи, зокрема логіко-філософський підхід до вивчення тимчасового житла як процесу, що відбувається в конкретних соціально-економічних умовах. Було проведено містобудівний та порівняльно-типологічний аналіз цих поселень, оцінивши їхній потенціал у контексті міського розвитку та забезпечення тимчасовим житлом. Було виявлено негативний вплив на міські структури через невідповідність потреб та викликів сталого розвитку, зокрема в плані функціональної ідентичності та інтеграції таких поселень в існуюче середовище. На основі отриманих результатів було запропоновано розглядати модульні поселення як частину багатфункціональних структур, які повинні бути гнучкими та адаптивними до змін у соціально-економічному контексті. Практичне значення цього дослідження полягає у розробці рекомендацій для містобудівників щодо впровадження адаптивних підходів у проектуванні тимчасових поселень, забезпечення сталого розвитку міських територій та сприяння соціальній взаємодії між внутрішньо переміщеними особами та місцевими громадами

Ключові слова: модульне місто; регіональний центр Західної України; міське середовище; контекстуальність; сталий розвиток

